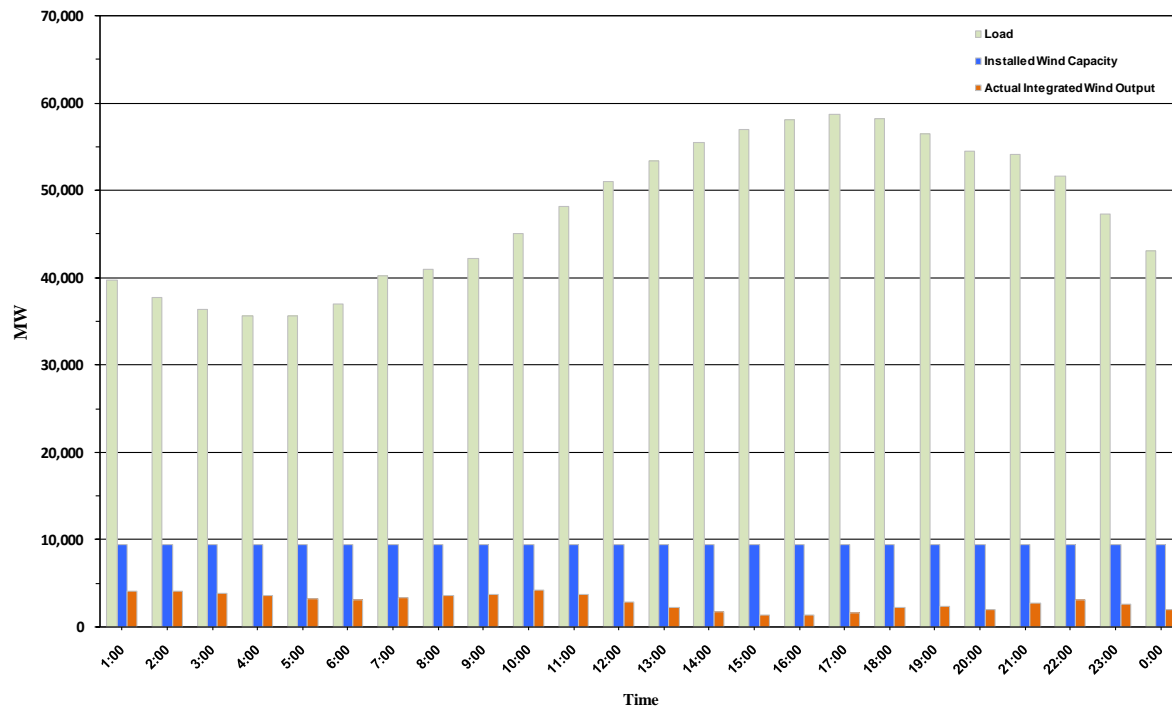




ERCOT Grid Operations Wind Penetration Report: 08/31/10

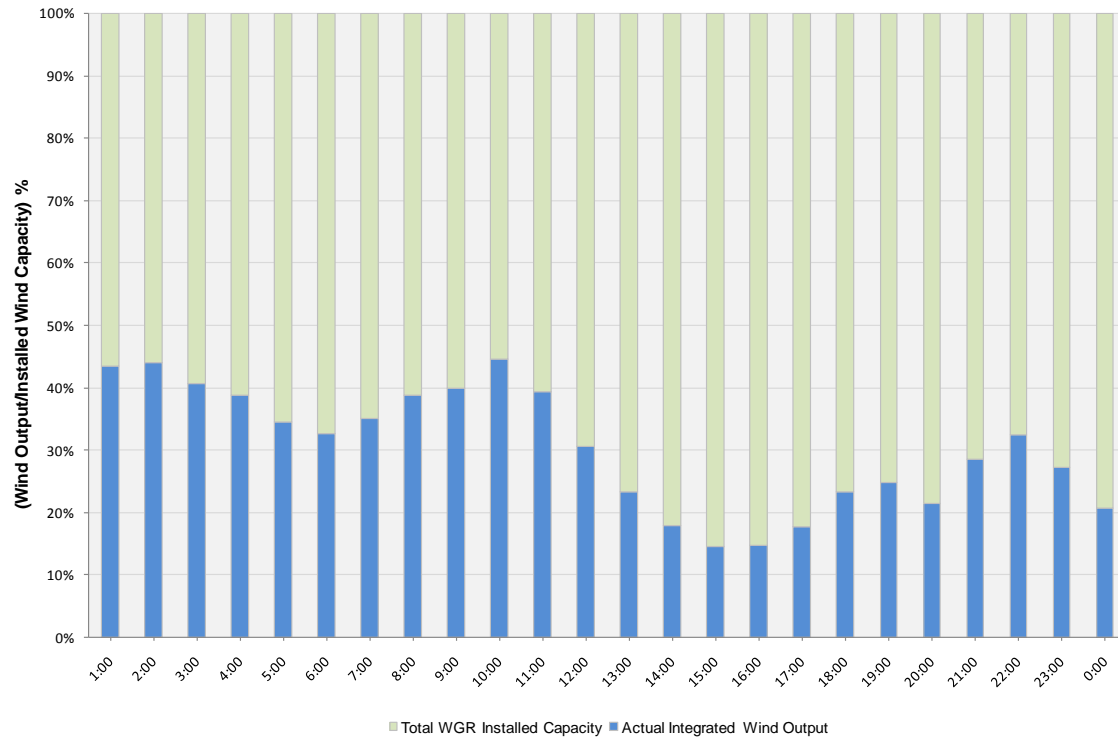
Peak Load	58,764 MW
Load Peak Hour	17
Wind Record 06/12/10	7016 MW
Max Wind value	4294 MW
Wind Peak Hour	09:29:56
Wind Penetration %	9.48

Hourly Average Actual Load vs. Actual Wind Output
08-31-2010

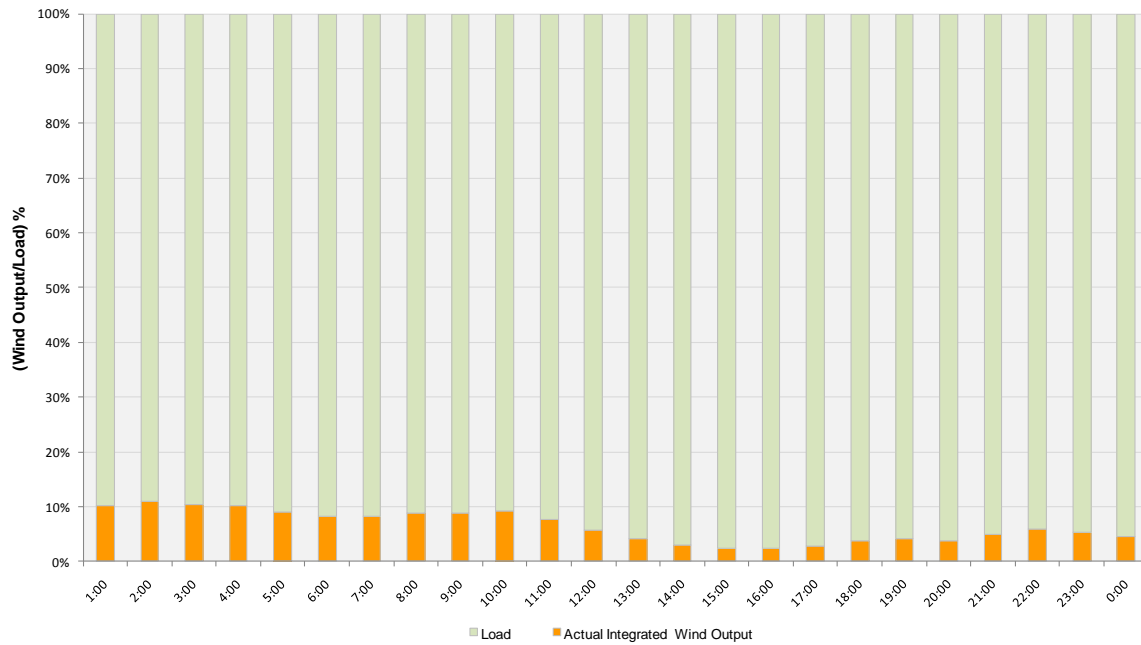




Actual Wind Output as a Percentage of the Total Installed Wind Capacity
08-31-2010



Actual Wind Output as a Percentage of the ERCOT Load
08-31-2010





ERCOT Load vs. Actual Wind Output 08/24/10 - 08/31/10

